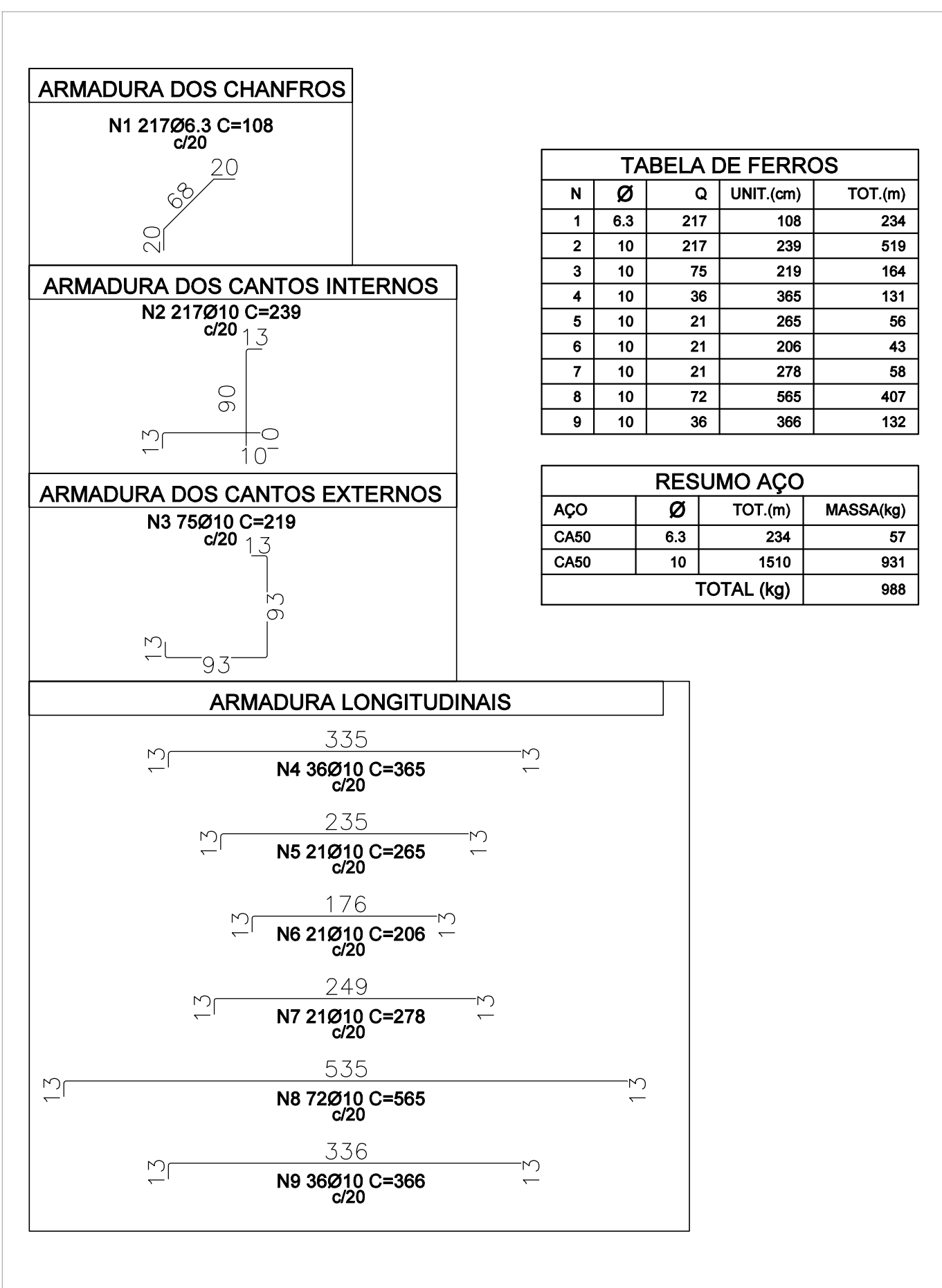
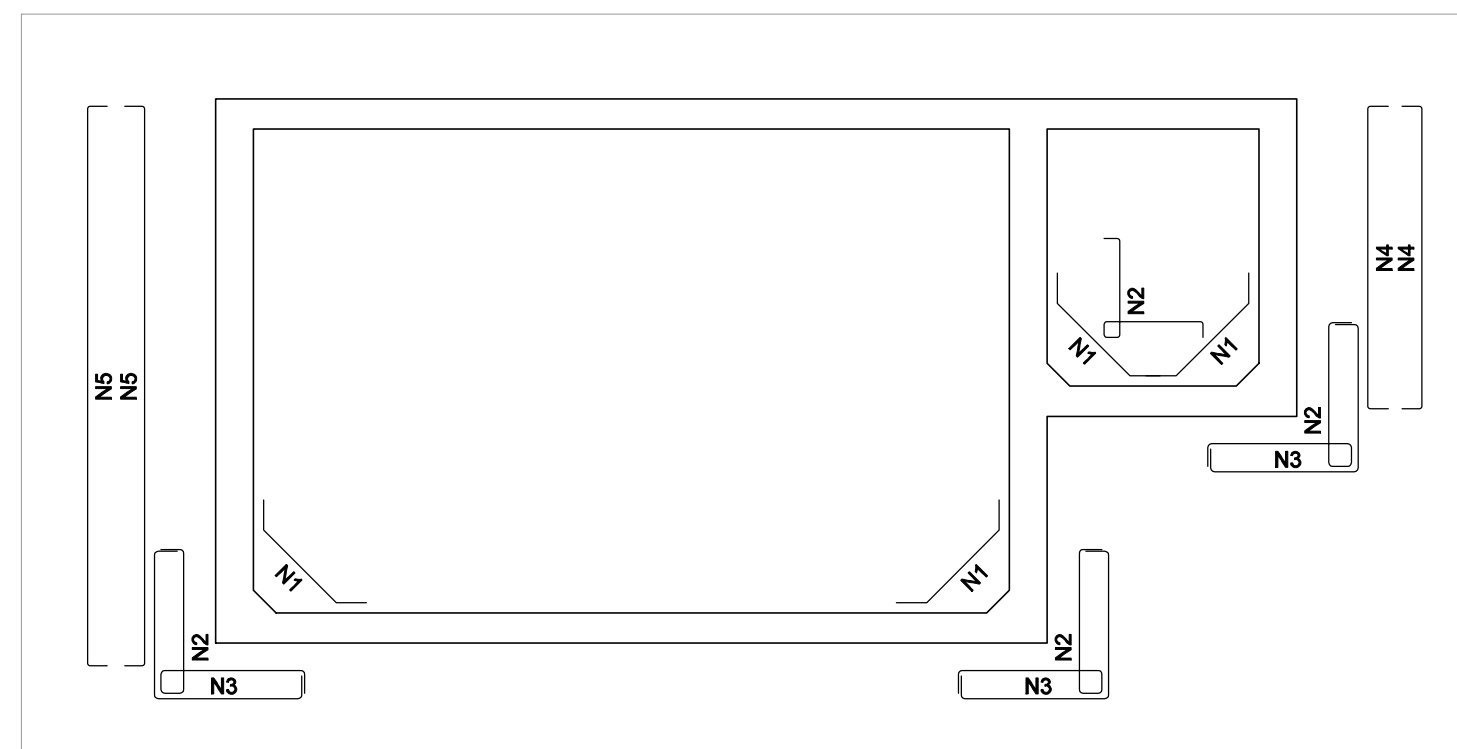


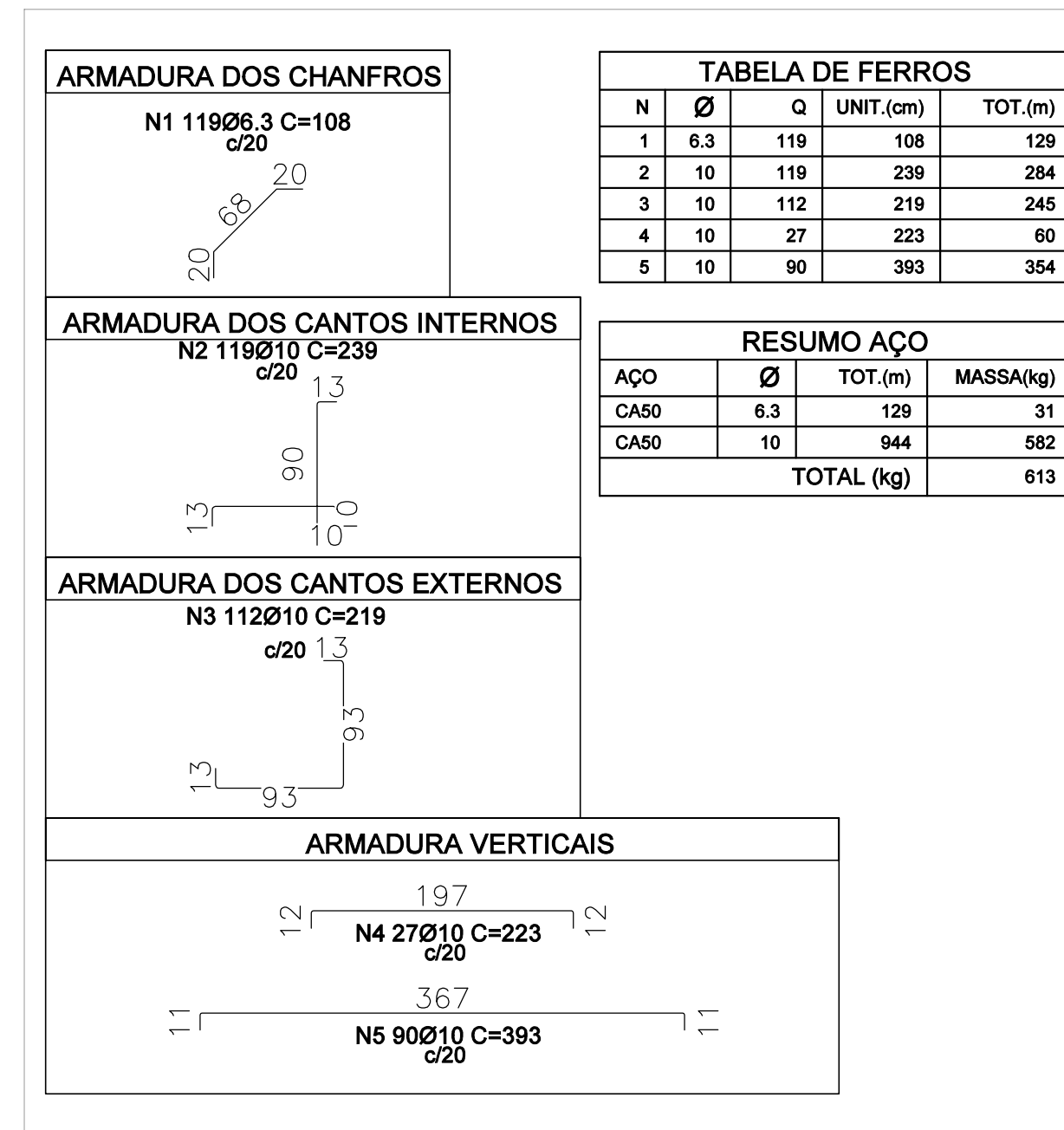
**ARMADURAS LONGITUDINAIS - RESERVATÓRIO ENTERRADO**  
**ESCALA: 1/50**



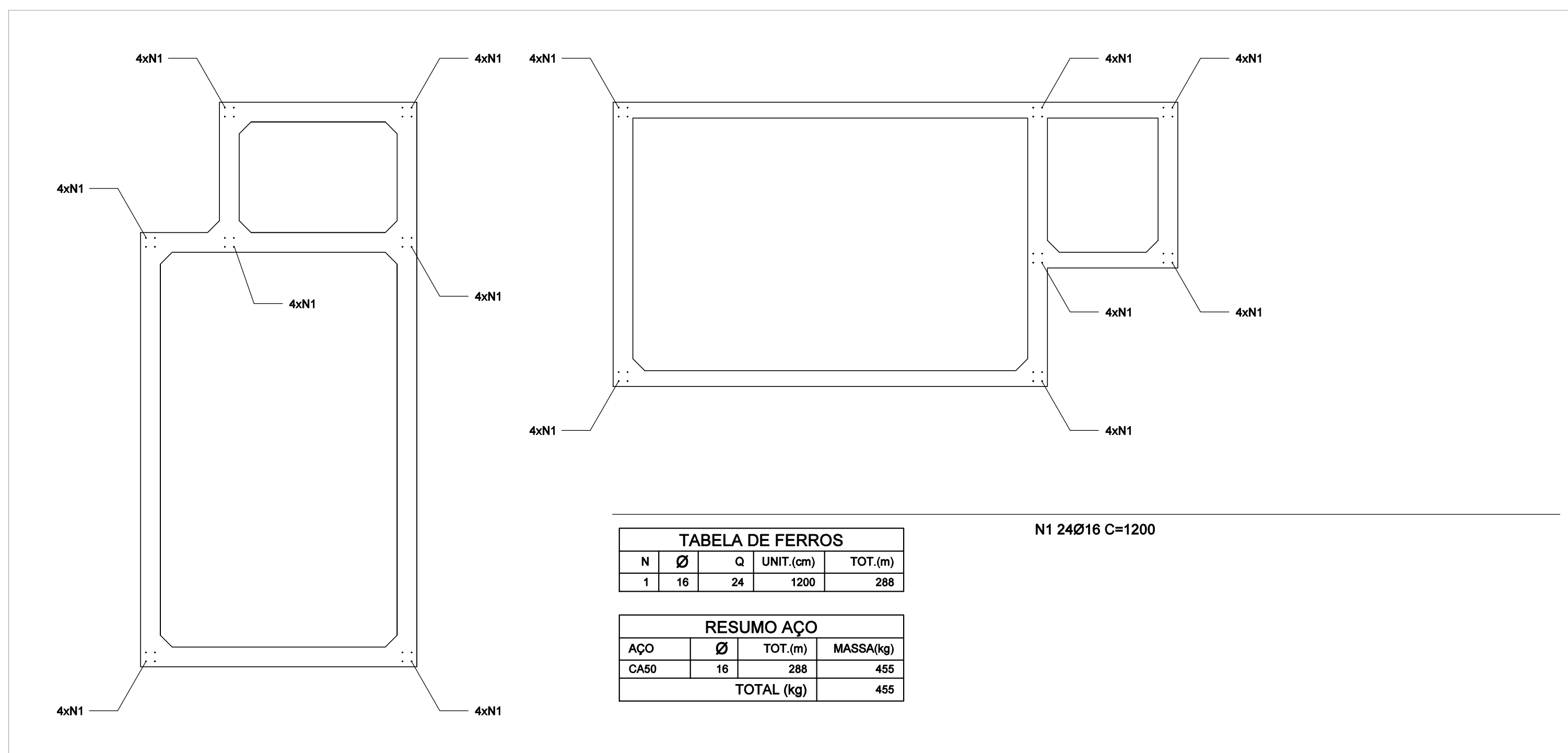
**DETALHAMENTO DAS ARMADURAS LONGITUDINAIS**  
ESCALA: 1/50



**ARMADURAS VERTICAIS - RESERVATÓRIO ENTERRADO**  
ESCALA: 1/50



**DETALHAMENTO DAS ARMADURAS VERTICAIS**  
**ESCALA: 1/50**



**ARMADURAS DAS EXTREMIDADES - RESERVATÓRIO ENTERRADO**  
 ESCALA: 1/50

TABELA DE FERROS				
N	Ø	Q	UNIT.(cm)	TOT.(m)
1	16	24	1200	288

RESUMO AÇO			
AÇO	Ø	TOT.(m)	MASSA(kg)
CA50	16	288	455
TOTAL (kg)			455